



Plastic Injection Molders Trusted Worldwide™

*A Quick Start Guide to using
Injection Works'
Customer Connect*

In your web browser, type www.injectionworks.com into the address bar. Add us to your favorites!

On the main page, click “Customer Login”

Plastic Injection Molding Company | Injection Molder for NJ, PA, DE, MD, NY | Injection Works - Windows Internet Explorer

http://www.injectionworks.com/

File Edit View Favorites Tools Help

Plastic Injection Molding Company | Injection Molder f...

Customer Login

iw INJECTION WORKS

Plastic Injection Molders Trusted Worldwide™

About Injection Works Technological Advantages See Our Quality News & Videos Case Studies Green Commitment Contact Us

How Clients Typically Engage Us

You are a: **Engineer/Project Manager**
Sourcing Expert

News and Press

Injection Works Invests in Solar Power
25 October 2011, 4:07 pm
Thinking global but acting local, Injection Works invests in Green Energy to offset 25% of their current energy needs. Injection Works, a custom injection molder in Mount Laurel, New Jersey announced today that it has given the green light to funding a new 290 KW solar energy generation system as part of its ongoing efforts.

Welcome

Injection Works provides superior quality plastic injection molding and related services. In business for over 20 years, our expertise helps clients all over the world, as we continue to grow our relationships and expand the range of quality services and products we provide. We invite you to explore our **Plastic Injection Molding Case Studies**, learn more about **Injection Works** business and clients, and if there's anything we can do to help you now, please **contact us!**

http://www.injectionworks.com/lqweb_customer_connect.php

Trusted sites

100%

2:06 PM

On the Customer Connect description page, click “Enter CustomerConnect Here”

Plastic Injection Molding - Injection Works - Windows Internet Explorer

http://www.injectionworks.com/iqweb_customer_connect.php

File Edit View Favorites Tools Help

Plastic Injection Molding - Injection Works

Customer Login

INJECTION WORKS Plastic Injection Molders Trusted Worldwide™

About Injection Works Technological Advantages See Our Quality News & Videos Case Studies Green Commitment Contact Us

Customer Connect

Welcome to CustomerConnect!

Your Secure Source for Immediate and Accurate Product Information

Powered by IQMS and IQ Web

Find accurate, up-to-date information on your open orders including

- Production Schedules
- Order and Release Quantities
- Inventory Levels
- Scheduled Delivery Dates
- Assigned Ship-To Points
- Tracking Details on In-Transit Products

INJECTION WORKS
CustomerConnect

[Enter CustomerConnect Here](#)

Want additional information?

Contact Us or Call us at 856-802-6444, and we'll be glad to help.

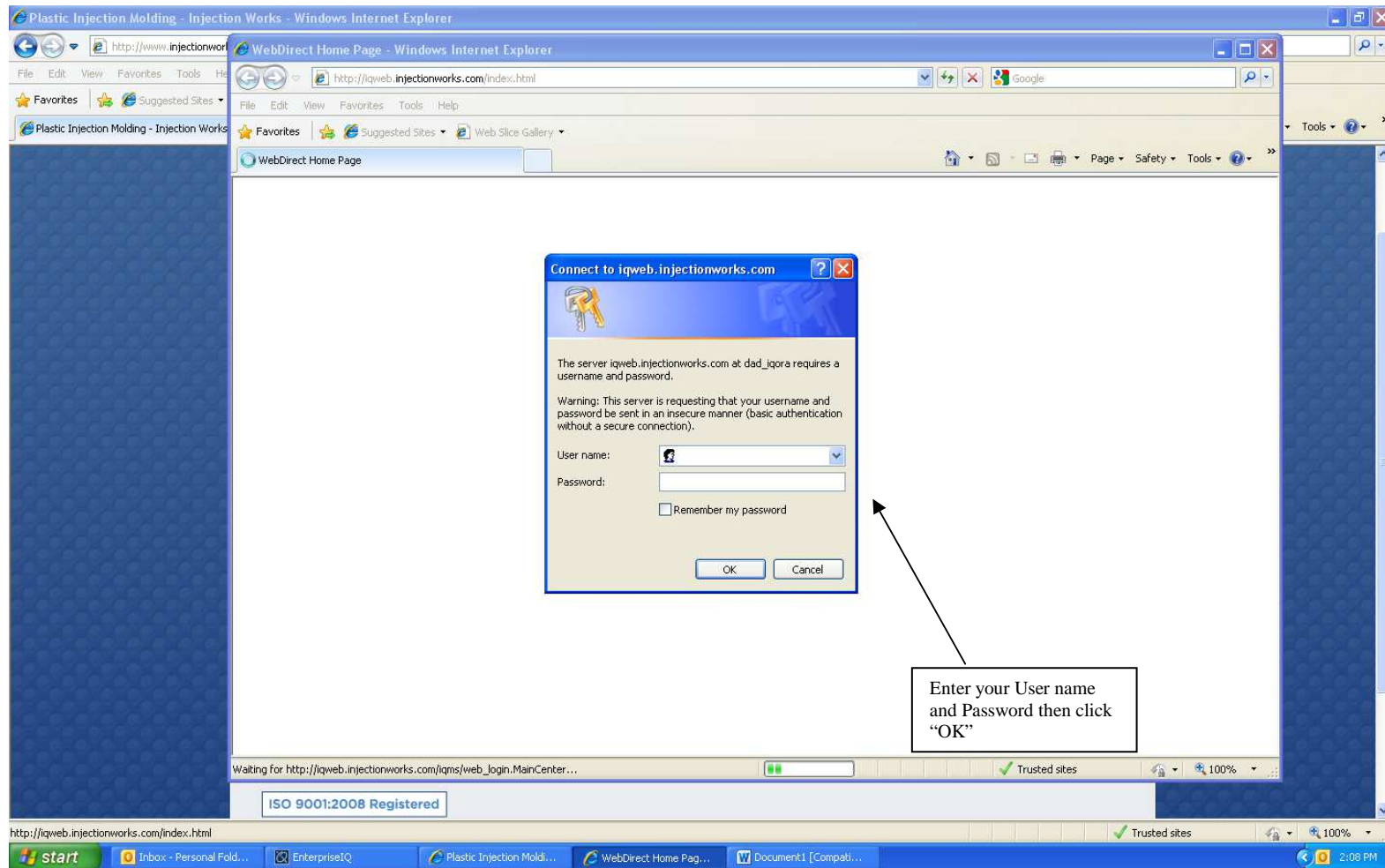
Click "Enter CustomerConnect here"

Done

Trusted sites 100% 2:07 PM

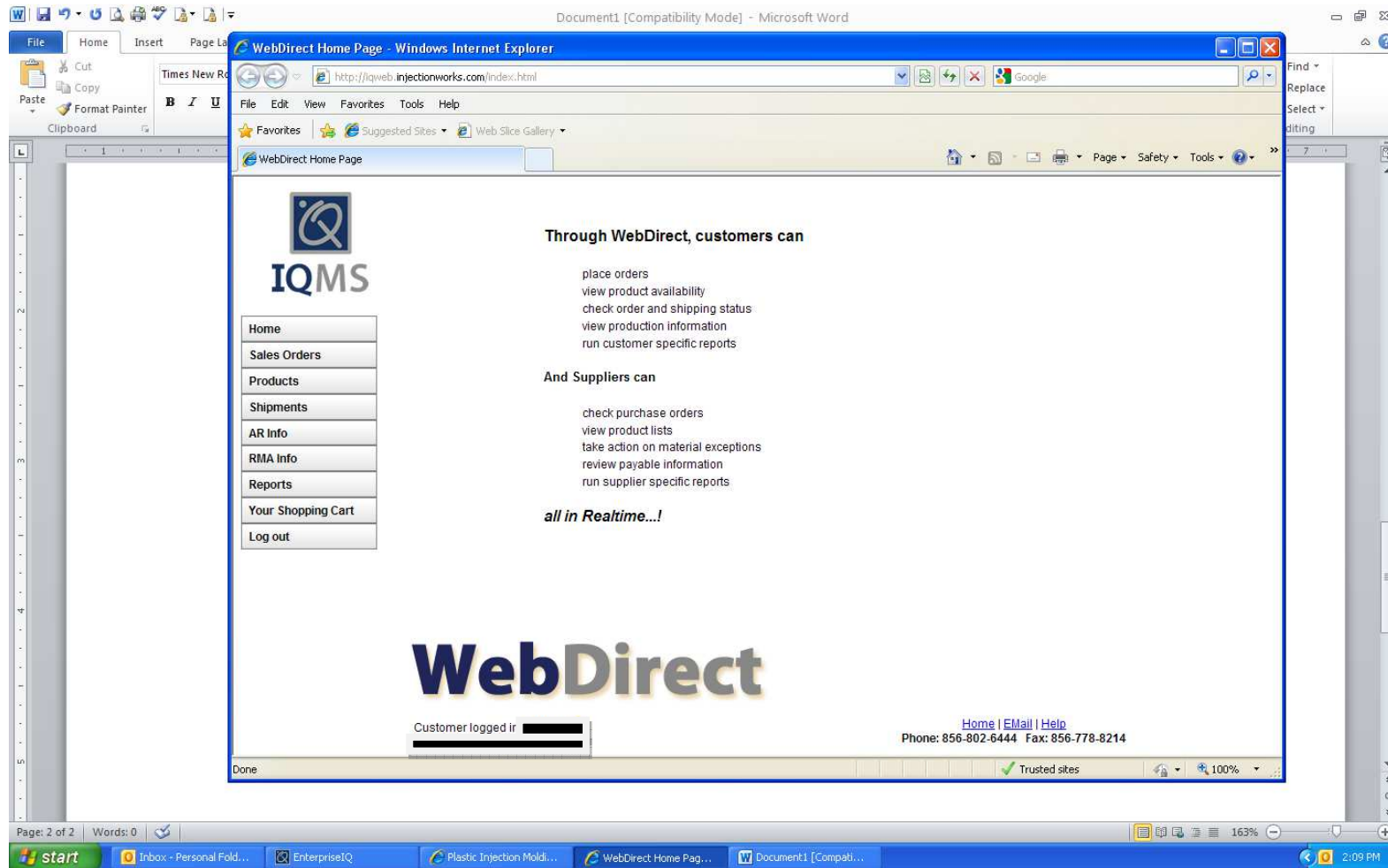
To access your information, enter your User name and Password. These items will be provided to you by an Injection Works Representative.

Click “OK”



Welcome to Injection Works' Customer Connect Portal!

Your User name and Password is unique. With it, your information is only available to you. You can feel free to explore the options available to you on this page.



The next three pages offer a visual guide to the most frequently used items on Customer Connect.

REPORTS! There's no need to tell your customers, "I'll call you back", anymore. The information is right here!

Under Reports, you can view your Open Order Schedule as well as Items in Stock at Injection Works.

Click "Reports" to view. Choose the Report Description you would like to view. Just click RUN to generate the report in any of the format options; HTML, Excel or Word.

The screenshot shows a Windows Internet Explorer browser window displaying the 'WebDirect Home Page' for 'Injection Works'. The page features a sidebar with navigation links: Home, Sales Orders, Products, Shipments, AR Info, RMA Info, Reports, Your Shopping Cart, and Log out. The main content area is titled 'Reports' and displays a table with the following structure:

Report Description	Run
Customer Order Schedule	[Run]
Items in Stock	[Run]

Below the table, there is an 'Output:' section with three radio button options: ☒ HTML, ☐ Excel, and ☐ Word. Two callout boxes provide instructions: one points to the 'HTML' option with the text 'Choose your format', and another points to the 'Run' button for 'Items in Stock' with the text 'Click "Run" to generate your report.' The footer of the page includes contact information: 'Home | Email | Help', 'Phone: 856-802-6444', and 'Fax: 856-778-8214'. The browser's address bar shows the URL 'http://iqweb.injectionworks.com/index.html'.

Below is a view of the Items in Stock Report.

Note: When location reads “Workcell-xx”, the item is currently in process. These quantities are subject to change.

The screenshot shows a web application interface with a sidebar menu on the left and a main content area. The sidebar menu includes links for Home, Sales Orders, Products, Shipments, AR Info, RMA Info, Reports, Your Shopping Cart, and Log out. The main content area displays an 'Inventory Listing By Item' report for Injection Works Inc. The report is dated 04/05/2013 at 2:10:00PM and is Page 1. The report table has the following columns: Item Number, Rev., Description, Location, Lot Number, Non-Conform, and On Hand. The data is as follows:

Item Number	Rev.	Description	Location	Lot Number	Non-Conform	On Hand
[REDACTED]			209A	8796	N	1,000.00
						1,000.00
[REDACTED]			203A	8272	N	500.00
						500.00
[REDACTED]			210A	8776	N	100.00
						100.00
[REDACTED]			212A	8305	N	200.00
						200.00
[REDACTED]			205A	8548	N	300.00
						300.00

Below is a view of the Open Order Schedule Report.

Plastic Injection Molding - Injection Works - Windows Internet Explorer

File Edit View Favorites Tools Help

http://www.injectionworks.com

WebDirect Home Page

IQMS

Home
Sales Orders
Products
Shipments
AR Info
RMA Info
Reports
Your Shopping Cart
Log out

Crystal Report Viewer - Windows Internet Explorer

File Edit View Favorites Tools Help

http://www.injectionworks.com/tempdocs/REP_EZTUBE_200975161759.HTM

Crystal Report Viewer

Customer Open Order Schedule
Injection Works Inc.

Criteria: Last Run Date of Update Schedule 4/5/2013 1:04:27PM

Order No.	PO No.	Item Number	Rev	Description	Promise Date	Must Ship	Ship Qty	WO No.	Firm	Center	Seq
					6/28/2013	6/28/2013	400				
					6/28/2013	6/28/2013	100				
					6/28/2013	6/28/2013	750				
					7/5/2013	7/3/2013	1,000	62100	17		4
					7/5/2013	7/3/2013	100	62102	17		3
					7/5/2013	7/3/2013	800				
					4/19/2013	4/17/2013	2,100	62067	17		1
					4/19/2013	4/17/2013	600	62101	17		2
					4/19/2013	4/17/2013	1,000				

ISO 9001:2008 Regis

Done

Trusted sites

100%

start | Inboxes - Personal Fold... | EnterpriseIQ | Plastic Injection Mold... | WebDirect Home Pag... | Crystal Report Viewe... | Document1 [Compati...

2:12 PM

SHIPMENTS! Is it on its way? When did it ship? It's all at your fingertips!

Below is a view of the Search Shipments Report.

Search Shipments

Search for: Ship Date

Search Results for " " (Showing: 1 through 20)

Ship Date	Item #	PO #	Description	Rev	Pack Slip #	Order #	Qty Shipped	Attn
05/02/2012					12754	5143	1250	
05/07/2012					12773	5143	200	
05/07/2012					12773	5143	400	
05/15/2012					12819	5174	150	
06/11/2012					12950	5174	1500	
06/13/2012					12983	5230	750	
06/20/2012					13003	5174	550	
06/21/2012					13008	5230	250	
06/25/2012					13023	5230	450	
06/25/2012					13023	5230	500	
06/29/2012					13044	5230	150	
06/29/2012					13044	5230	250	
07/17/2012					13135	5230	300	
07/30/2012					13225	5230	250	
07/30/2012					13225	5230	200	
07/30/2012					13225	5230	150	
08/05/2012					13267	5260	250	
08/09/2012					13286	5174	150	
08/09/2012					13286	5174	875	
08/14/2012					13313	5174	125	

Customer logged in [redacted]

Phone: 856-802-6444 Fax: 856-778-8214

Please feel free to call us with any questions you may have regarding Customer Connect. We'll be happy to guide you through!